

Human Anatomy Puzzles and Diagrams

Included in this download are printable puzzles to help you learn and label the main parts of the human body.

Human Anatomy Magnetic Puzzle:

Print out pages 3-7 on cardstock, then laminate with regular laminate or magnetic laminate. Cut out puzzle pieces, and word cards. Put puzzles together and use the word cards to label each section of the human body.

Life Size Human Anatomy Diagram:

Print pages 9-15 (COLOR) OR 17-22 (B/W) on cardstock or regular copy paper. Cut out individual organs and place on a life size tracing of your child's body.

- ⇒ Page 8 is a listing of organ functions.
- ⇒ Pages 9-16 are full color organs.
- ⇒ Pages 17-22 are black and white life size organs.
- ⇒ Pages 23-25 are answer keys to help with organ placement.

You can find more printables online at:
www.confessionsofahomeschooler.com

Erica Made Designs, LLC Terms of Use

All downloads on www.confessionsofahomeschooler.com and its contents are copyright of Erica Made Designs, LLC © 2012. All rights reserved.

Personal Use Only:

My downloads are provided to you for your own personal use. Accordingly, you agree that you will not copy, reproduce, alter, modify, create derivative works, or publicly display any content from my downloads, except for your own personal, non-commercial use.

You may post pictures of your family using my downloads on your personal blog provided that Confessions of a Homeschooler is properly attributed in the post.

No Redistribution. You may not reproduce, repackage, or redistribute the contents of COAH downloads, in whole or in part, for any reason.

No Commercial Use. My downloads may not be used for commercial purposes. For example, you may not do any of the following: use the downloads to sell a product or service; use the download to increase traffic to your Web site for commercial reasons, such as advertising sales.

Any use of the downloads that infringes upon the intellectual property rights of Confessions of a Homeschooler or that is for commercial purposes will be investigated, and the owner shall have the right to take appropriate civil and criminal legal action.

Modifications of Terms.

I shall have the right to modify the terms of this Agreement at any time, which modification shall be effective immediately and shall replace all prior Agreements.

You are more than welcome to:

- Save the files on your computer and print off copies for yourself {or classroom} whenever you would like.
- Link directly to [my site {or blog}](#) , www.confessionsofahomeschooler.com, to share my files with others.
- Write blog posts showing images of your students using my files as long as proper credit to Confessions of a Homeschooler is given.

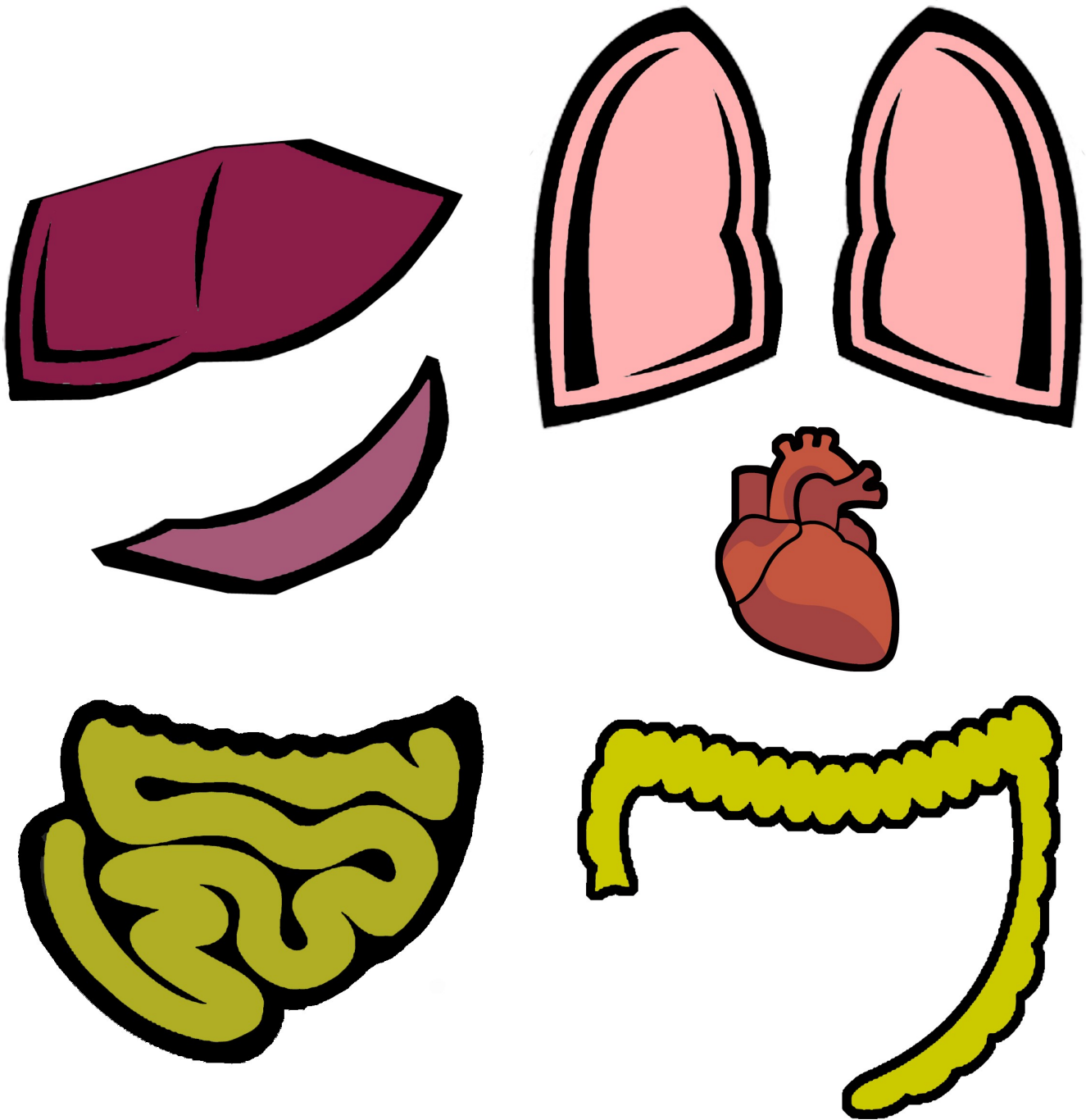
YOU MAY NOT:

- Host any of my files on your own or other sites.
- **Alter** or **sell** any of my files.
- Sell files to make a profit: All files are for personal use only. You may NOT use my items for sale or profit. ~ i.e. print them off, laminate them and sell them to others.
- Transmit or store any resources on any other website or other form of electronic retrieval system.
- All downloads are copyright protected. Not to be distributed, transferred, or shared in any form.

Clipart: Clipart used with permission from www.clipart.com

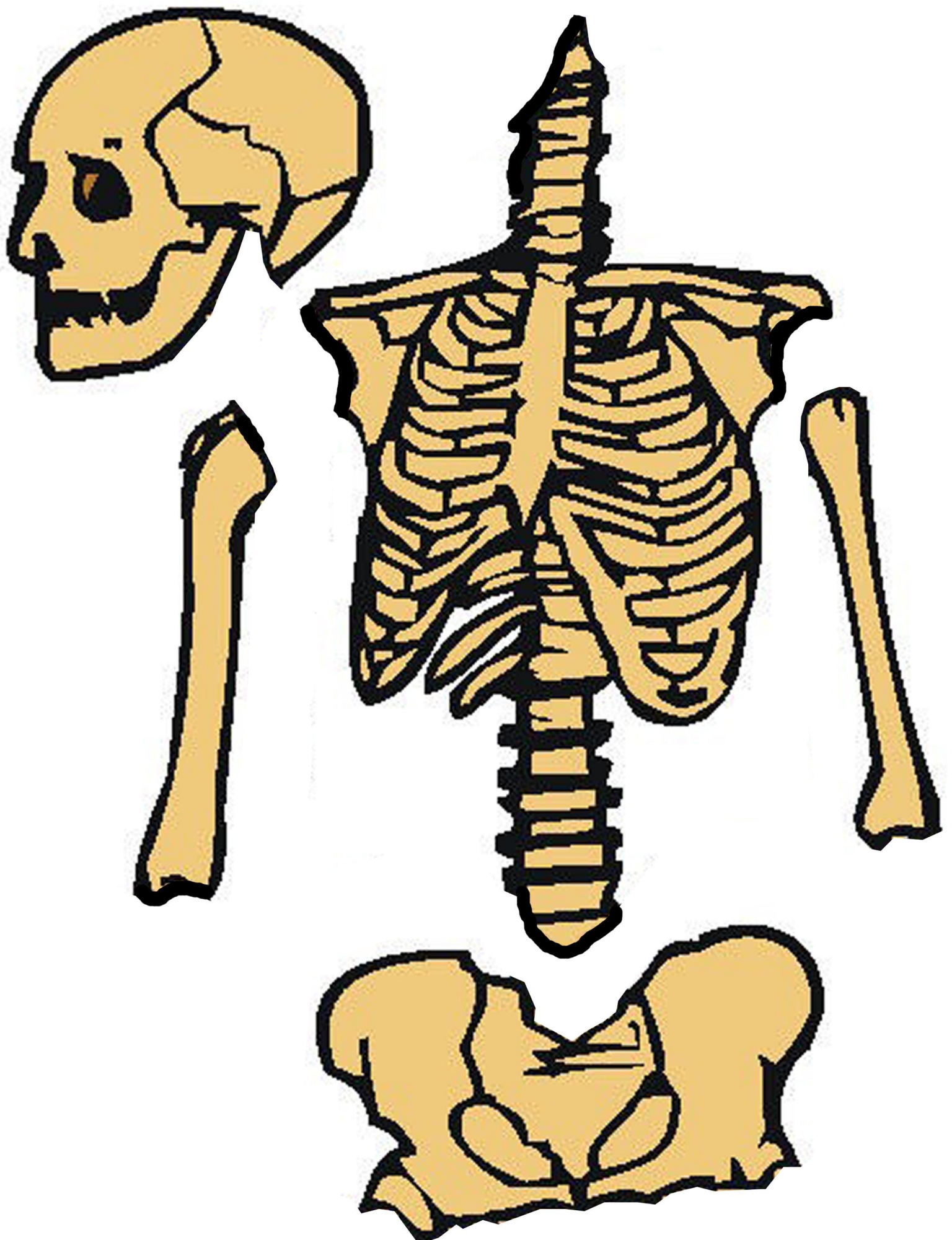
If you have any questions please feel free to email me directly at erica@confessionsofahomeschooler.com. I will do my best to respond promptly.

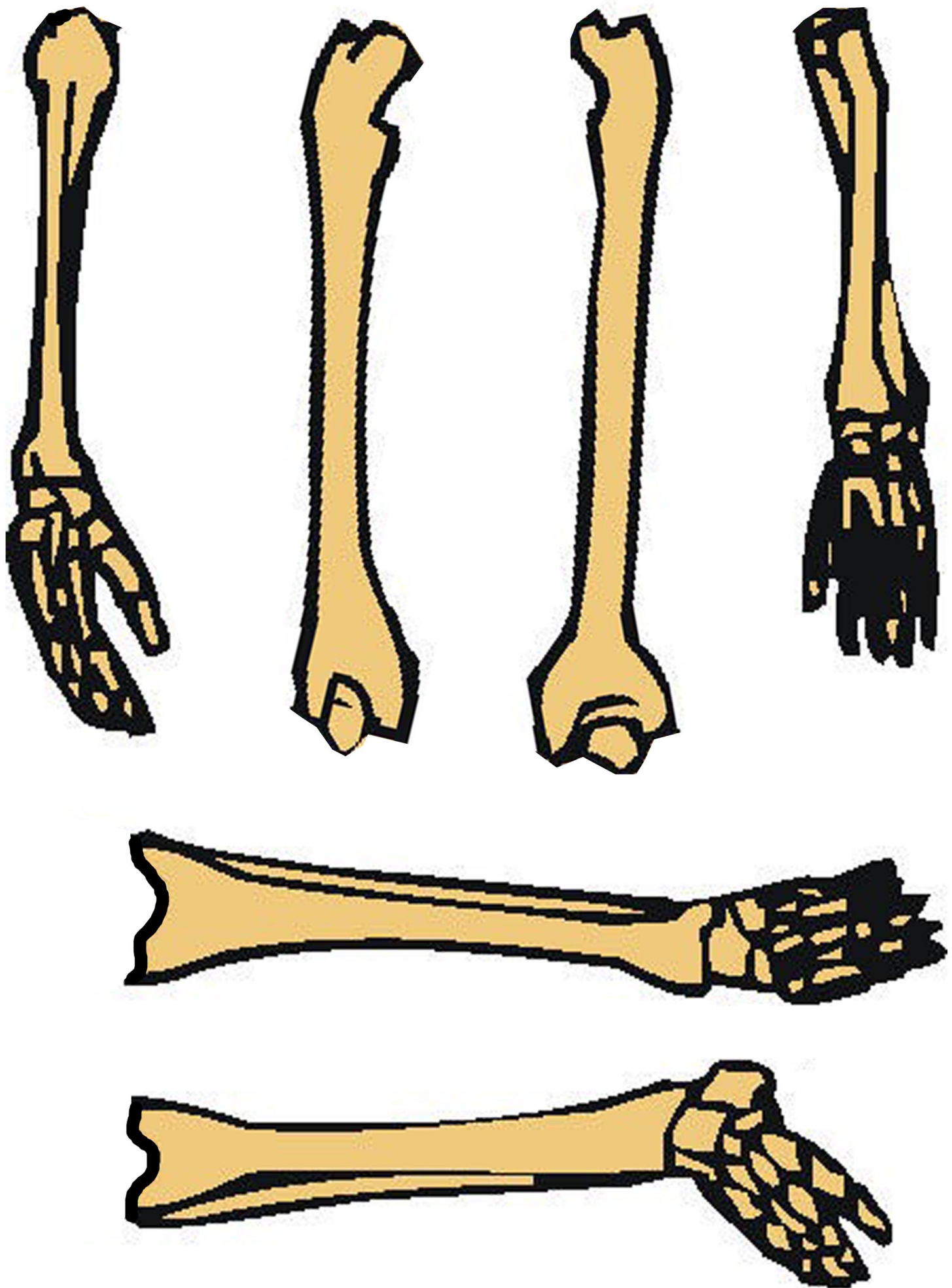
Human Organ Pieces



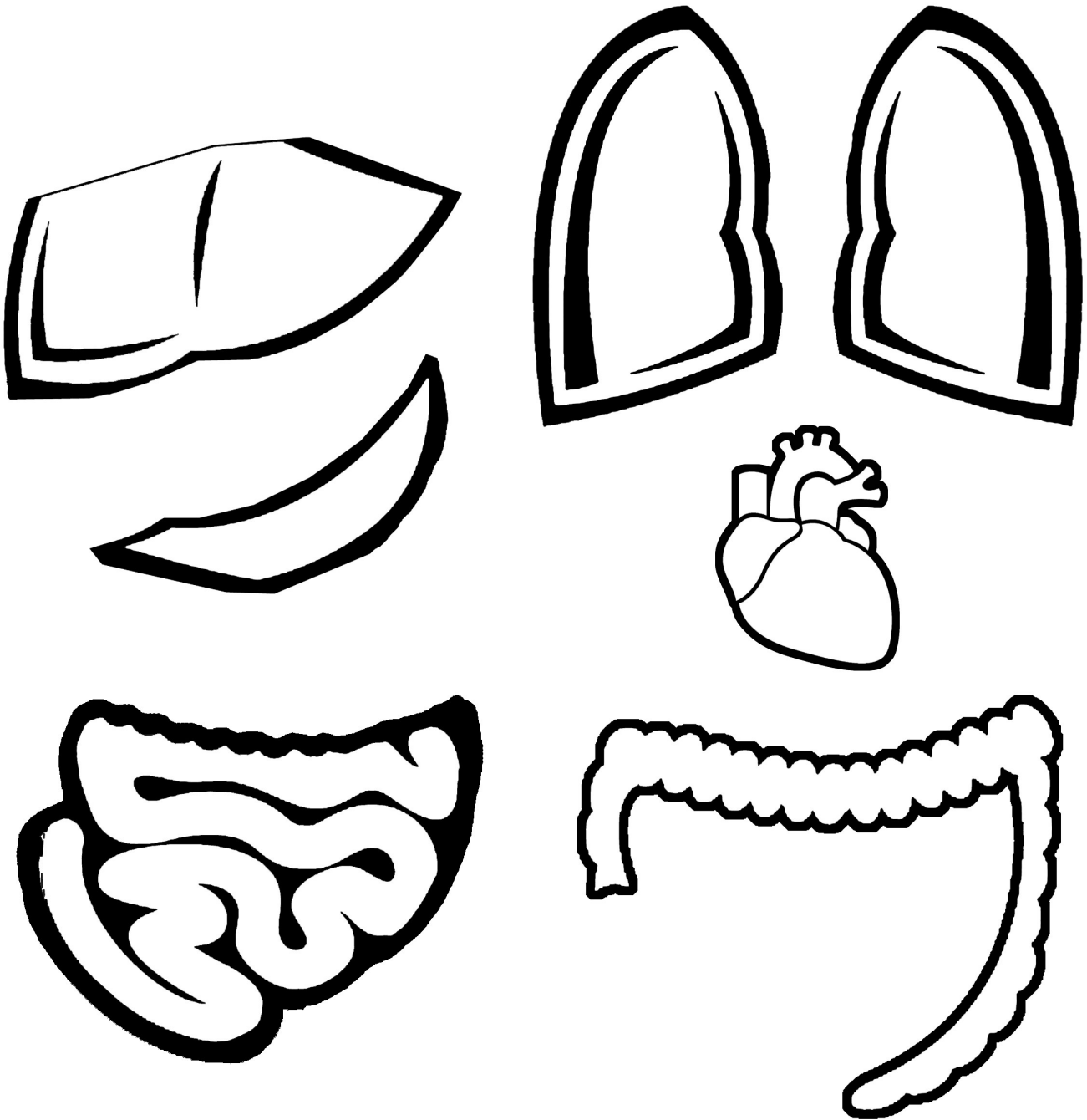
Brain Puzzle Pieces



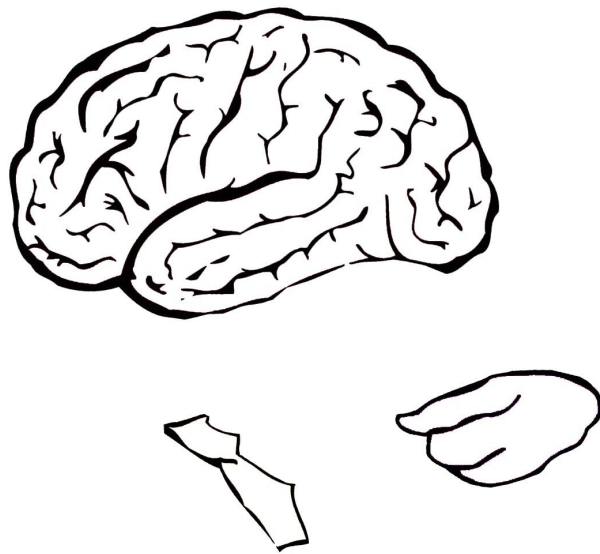


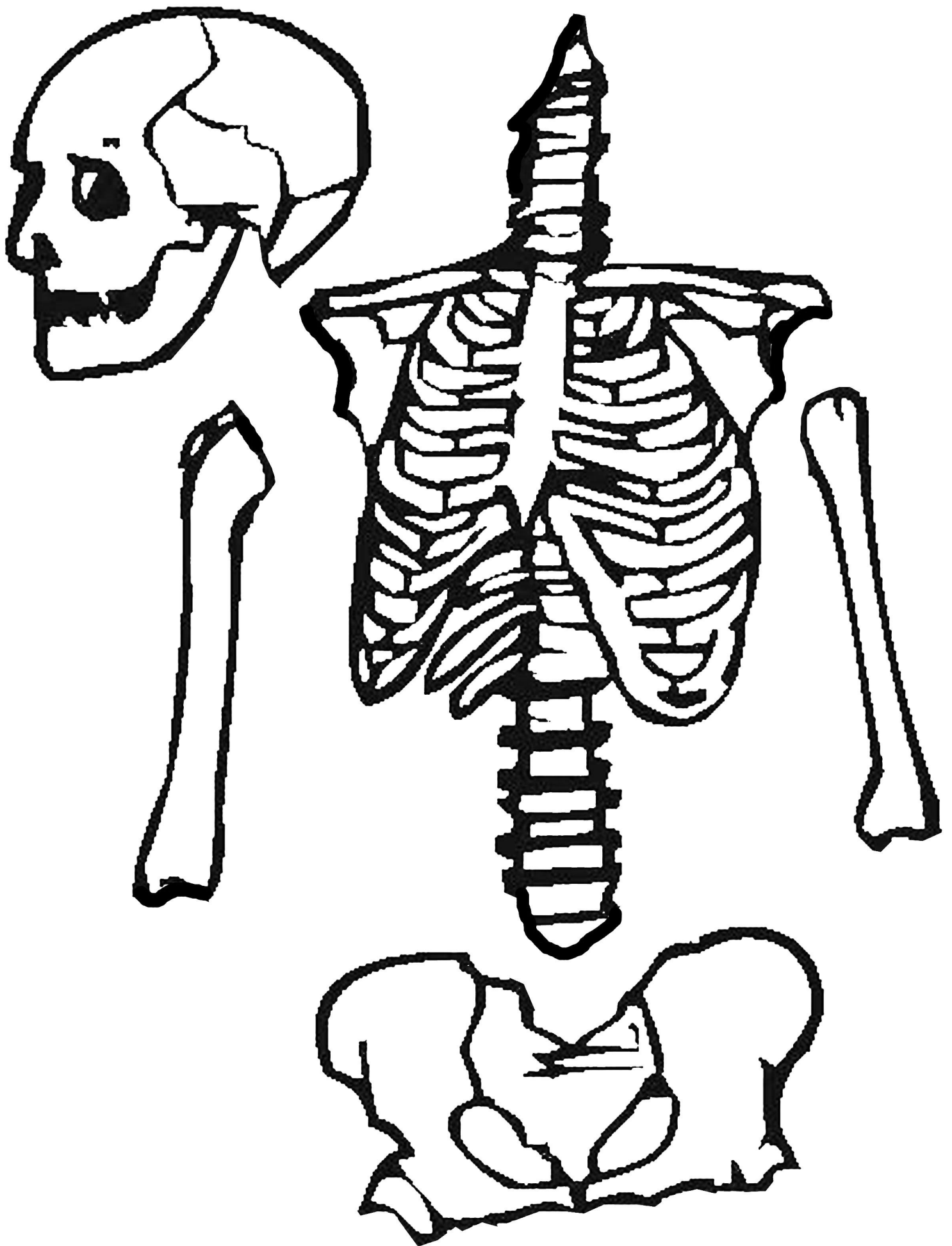


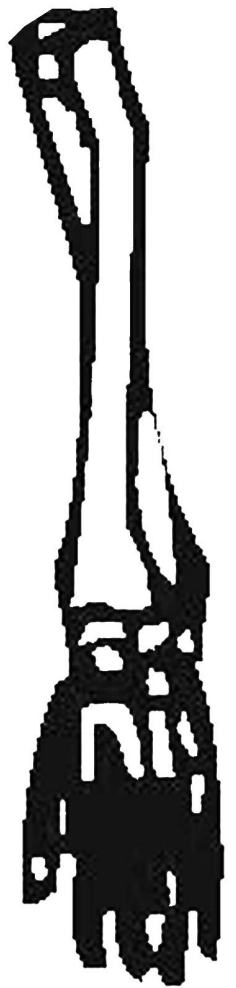
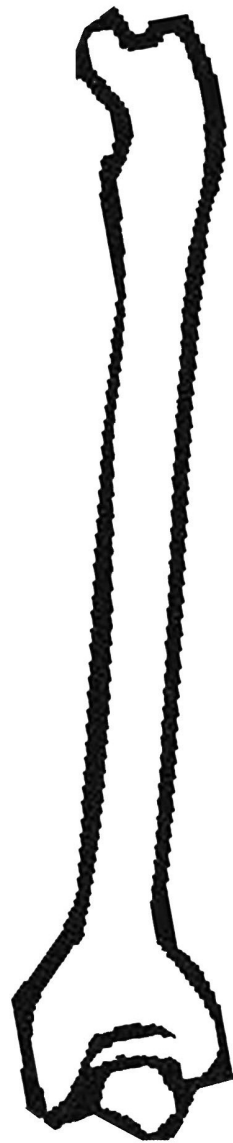
Human Organ Pieces



Brain Puzzle Pieces







Skeleton Vocabulary

Skull	Spine
Rib Cage/ Scapula	Pelvis
Femur	Fibula/ Tibia
Humerous	Radius/ Ulna

Human Organ Vocabulary

Heart	Lungs	Liver
Stomach	Large Intestine	Small Intestine

Human Brain Vocabulary

Cerebrum	Medulla Oblongata	Cerebellum
----------	----------------------	------------

Life Size Anatomy Pieces

Supplies:

- Butcher paper
- Pencil
- Scissors
- Glue

Directions: Trace an outline of your child's body on a large piece of butcher paper. Using the life size organs on the following pages, place them on your child's body outline. Tape or glue them in place along one edge so they can flip up. Lift each piece and write the function of the organ underneath the flap.

Brain: Your brain is located in your skull, and is the boss of your body! It controls just about everything you do, even when you're sleeping! It is made up of the Cerebrum, Cerebellum, brain stem, pituitary gland, and hypothalamus. Your brain helps you solve math problems, draw pictures, and figure out how to play your favorite video game!

Lungs: Your lungs make up one of the largest organs in your body. They are located on either side of your chest. The left lung is a bit smaller than your right lung to leave room for your heart. The lungs are protected by your rib cage. They are special because they allow you to take in fresh air, get rid of stale air, and even talk!

Heart: The heart is a muscle located a little to the left of the middle of your chest. It's about the size of your fist. It is special because it pumps blood all around your body providing your body with the oxygen and nutrients it needs. It also carries away waste.

Intestines:

Stomach: Your stomach is like a mixer that mashes all of the food you eat together. It stores the food you've eaten, breaks it down into a liquid mixture, then slowly empties that mixture into your small intestine.

Small Intestine: The small intestine is a tube about 11.5 to 2 inches around and packed inside your body right underneath your stomach. If you stretched it out, an adult's small intestine would be about 22 feet long! This organ breaks down your food even more so your body can absorb all of the vitamins, minerals, proteins, carbohydrates, and fats.

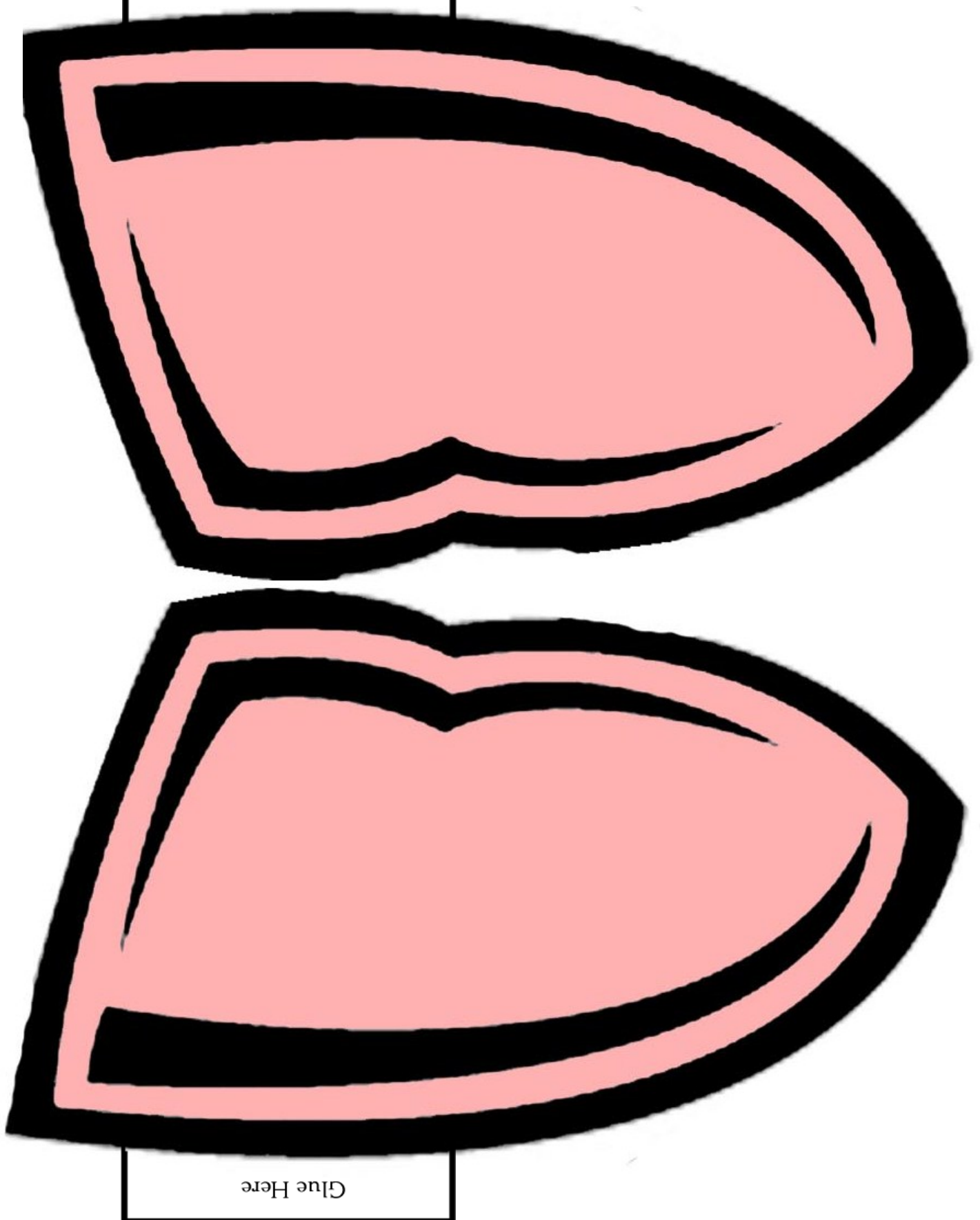
Liver: Your liver processes all of the nutrient-rich blood that flows through your body. It filters out harmful wastes and even helps figure out how many nutrients will go to the rest of your body and how many will stay behind in storage.

Large Intestine: The large intestine is about 3-4 inches around and about 5 feet long if you spread it out. The large intestine carries your waste, the stuff your body can't use, down to your colon, through the rectum and then it gets passed out into the toilet.

Visit <http://kidshealth.org/kid/> for more information on your body and how it works!

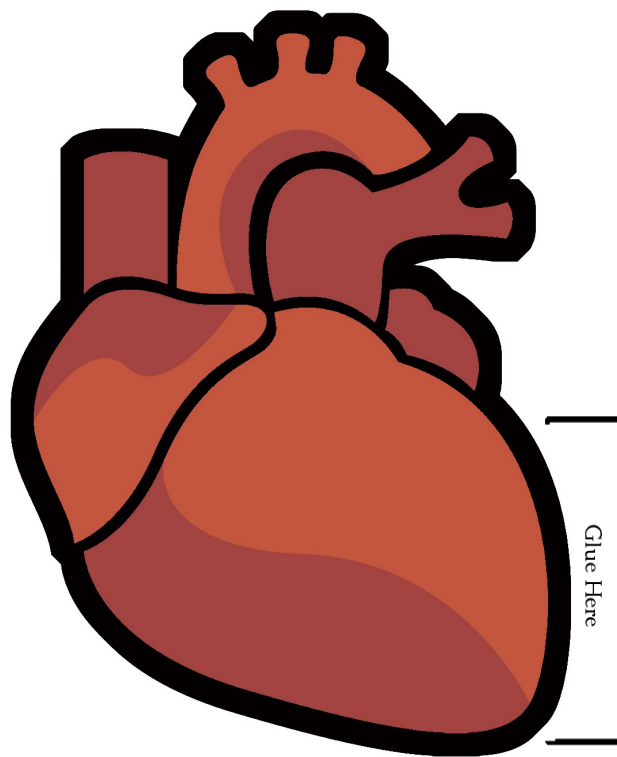
Lungs

Glue Here

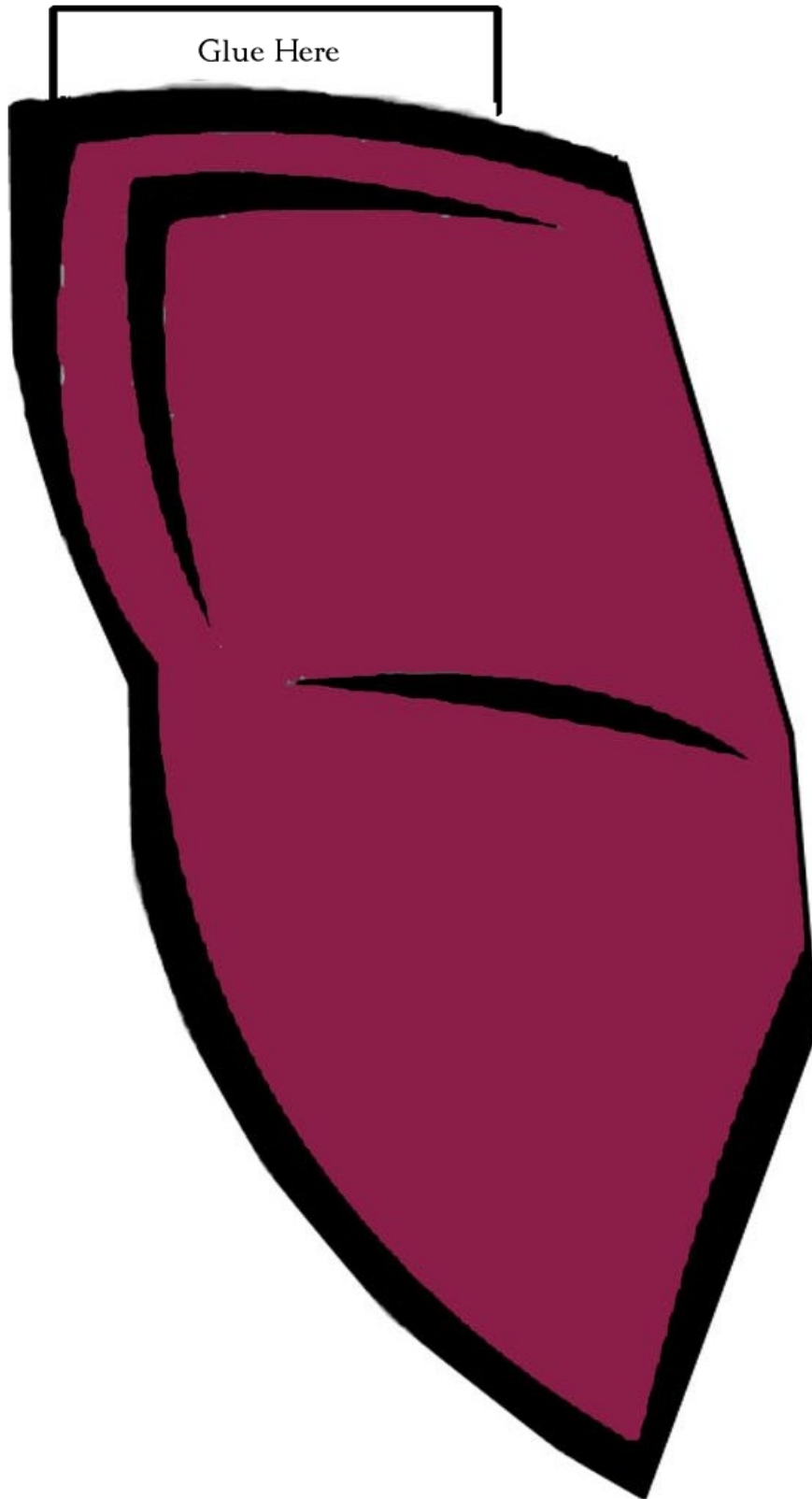


Glue Here

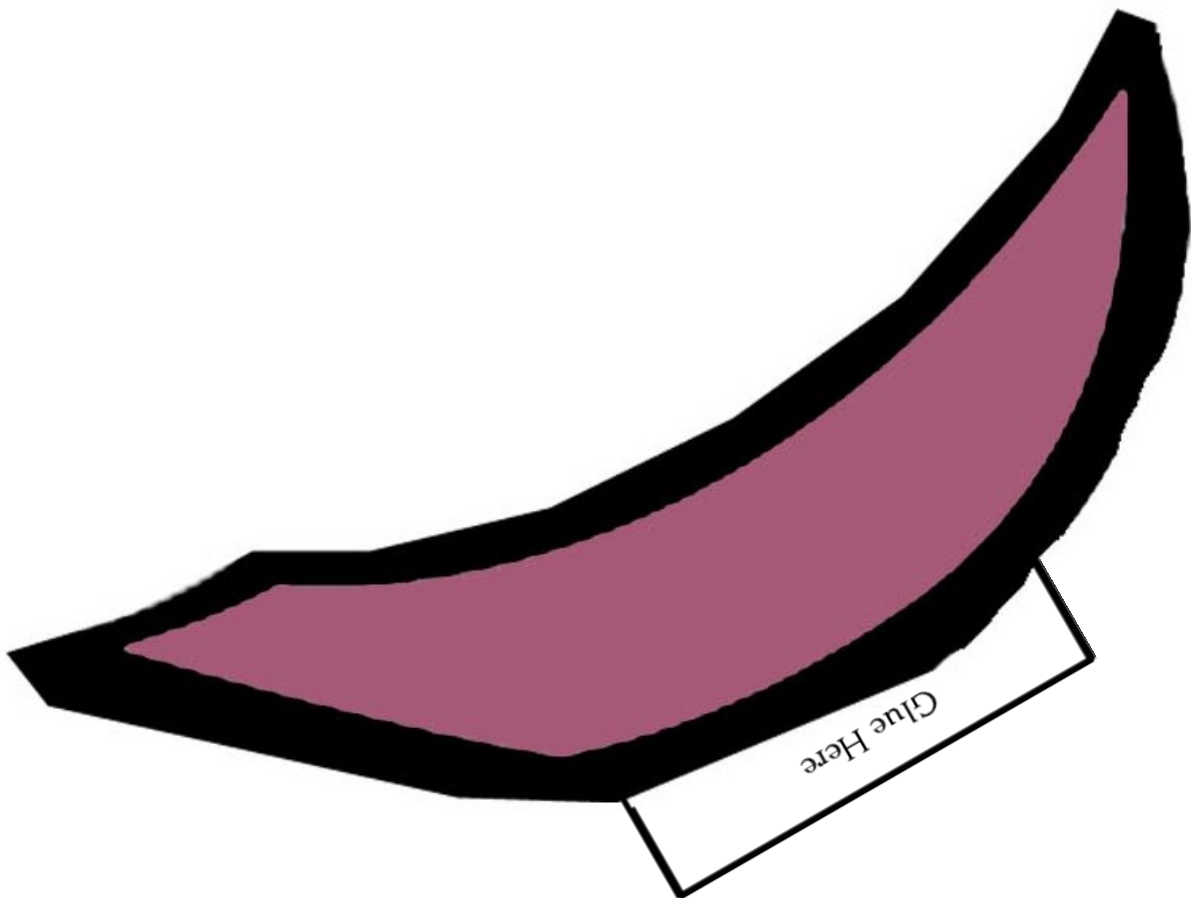
Heart



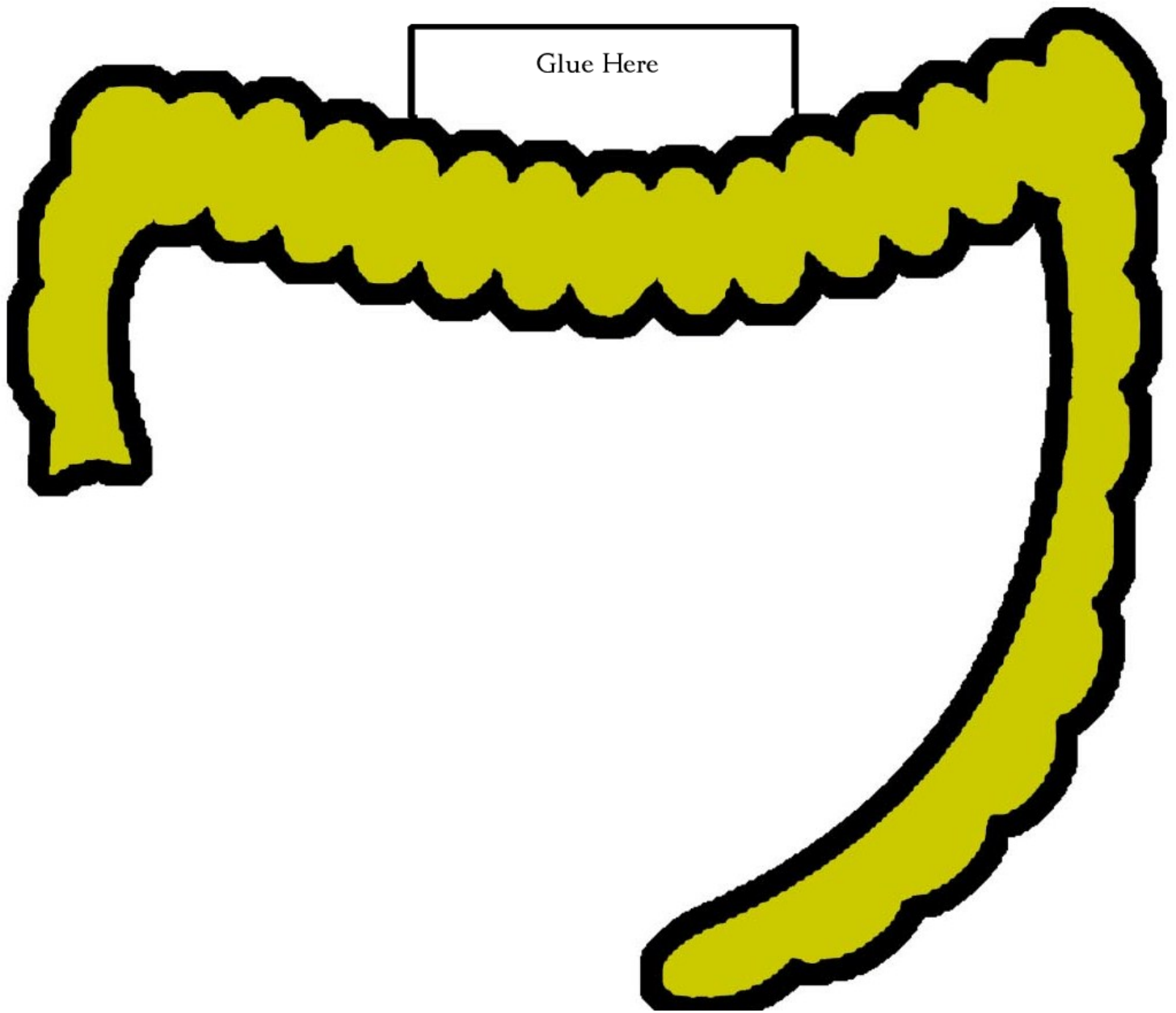
Liver



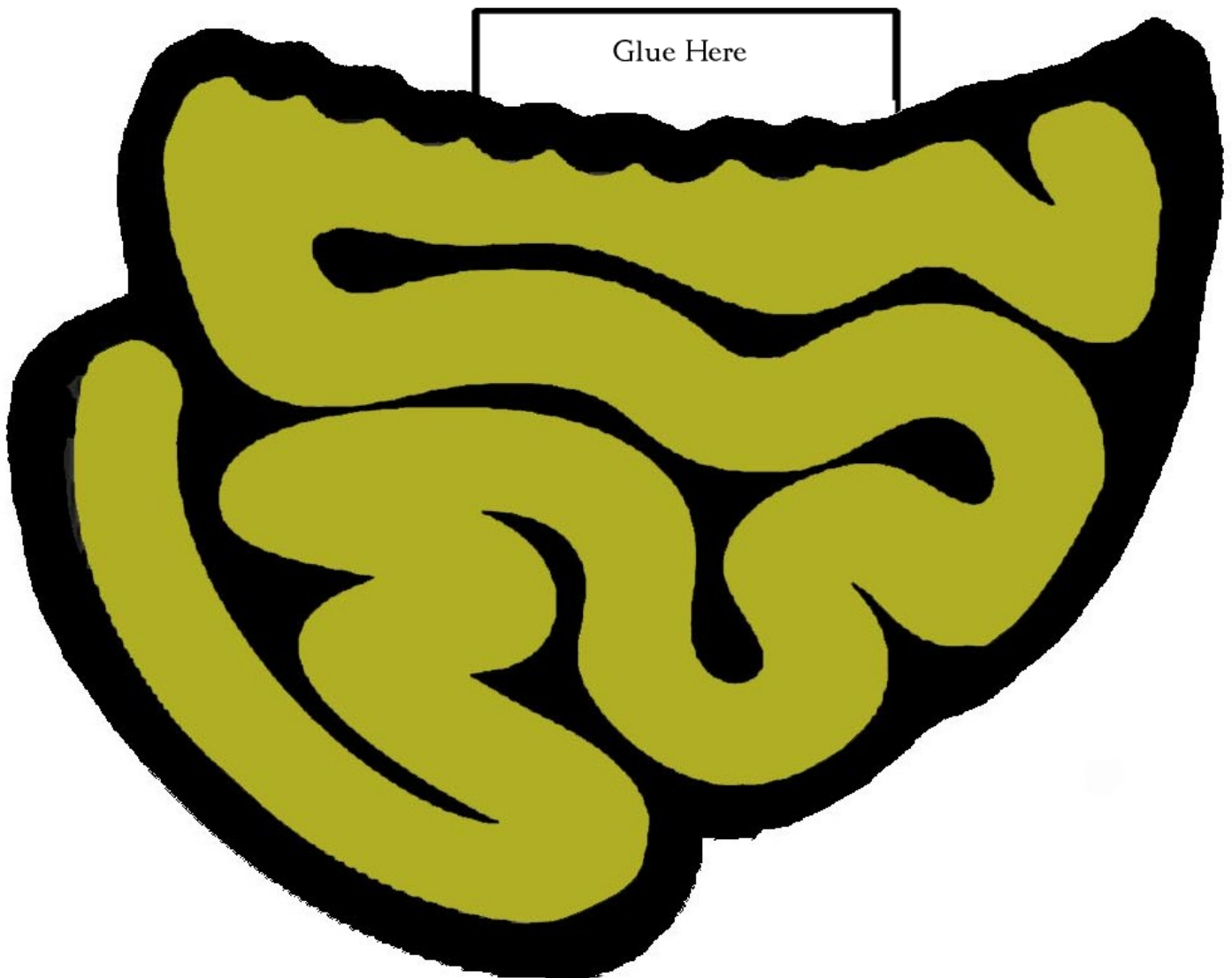
Stomach



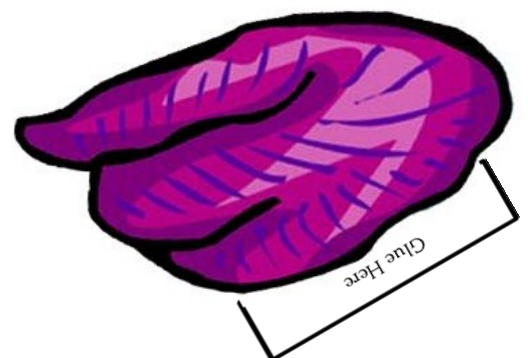
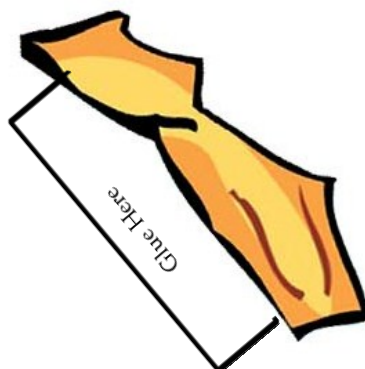
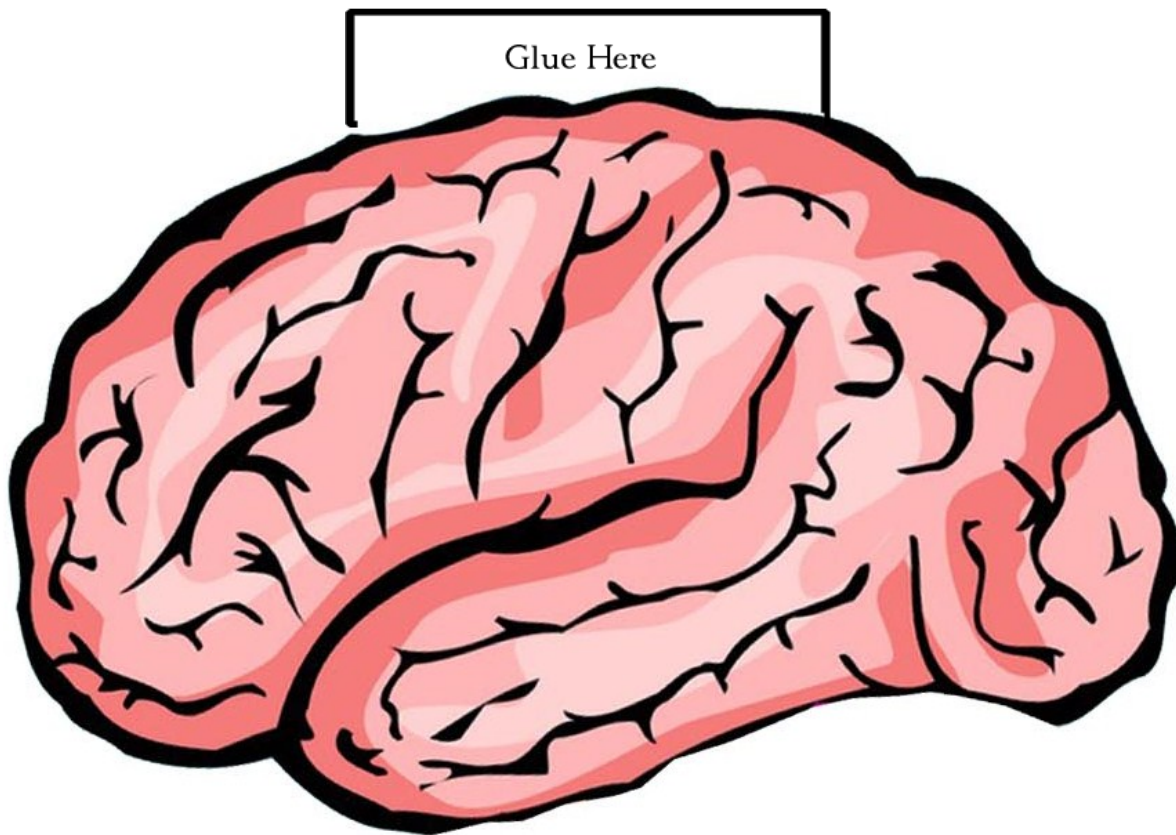
Large Intestine



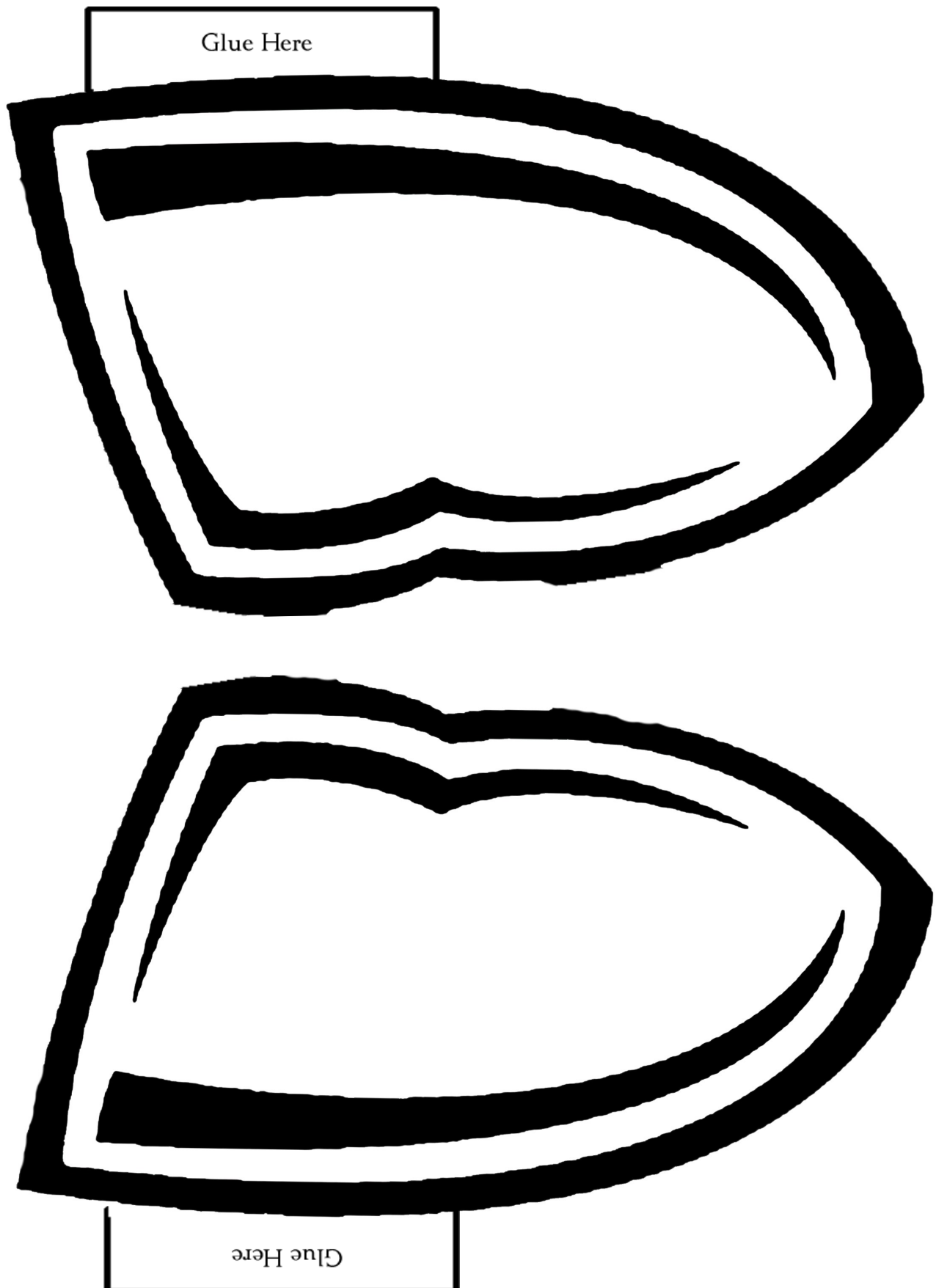
Small Intestine



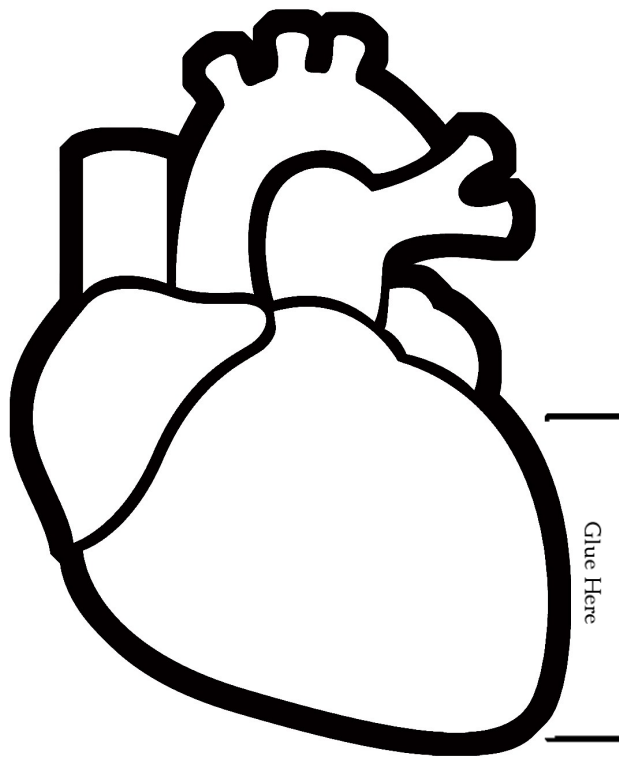
The Brain



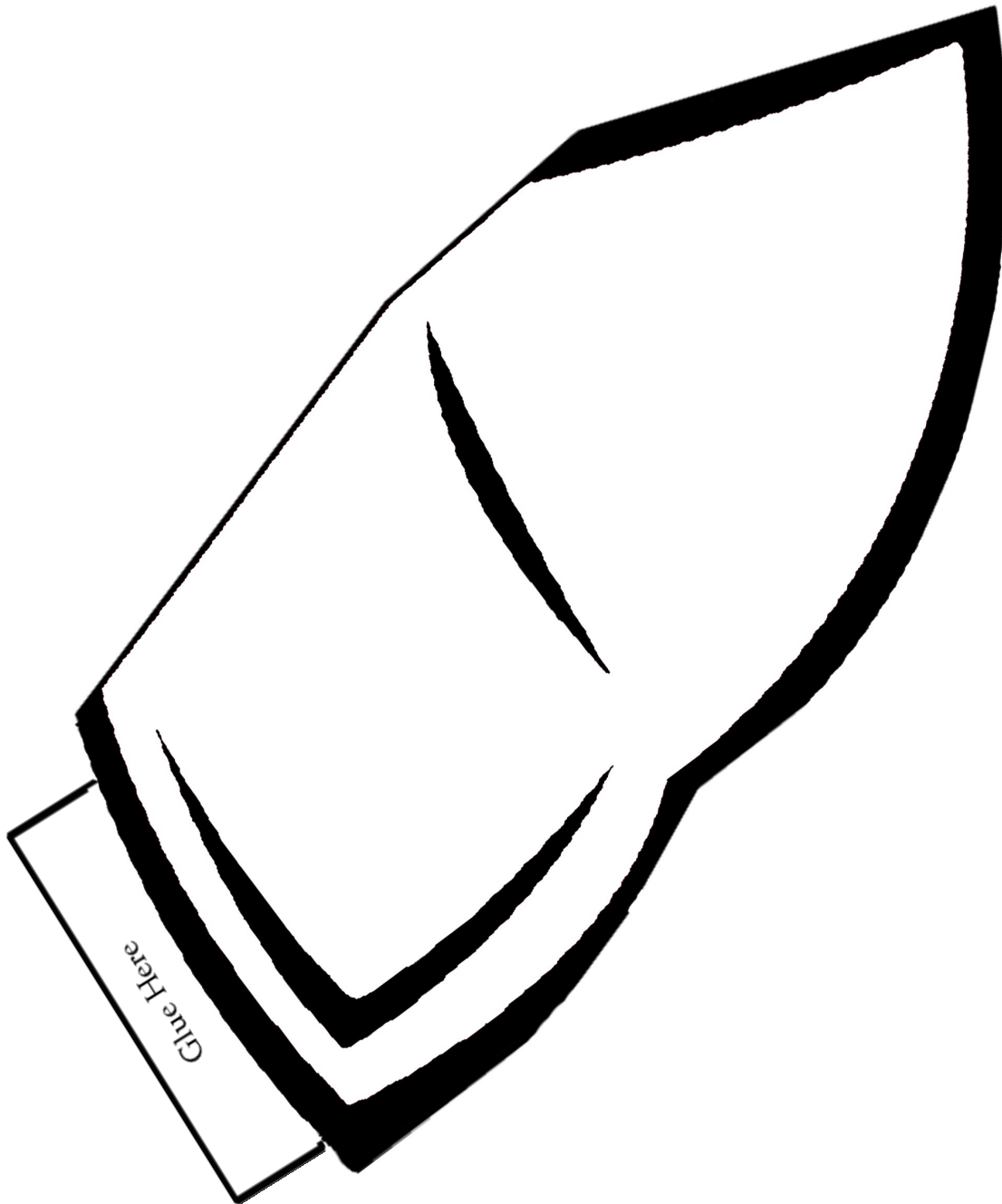
Lungs



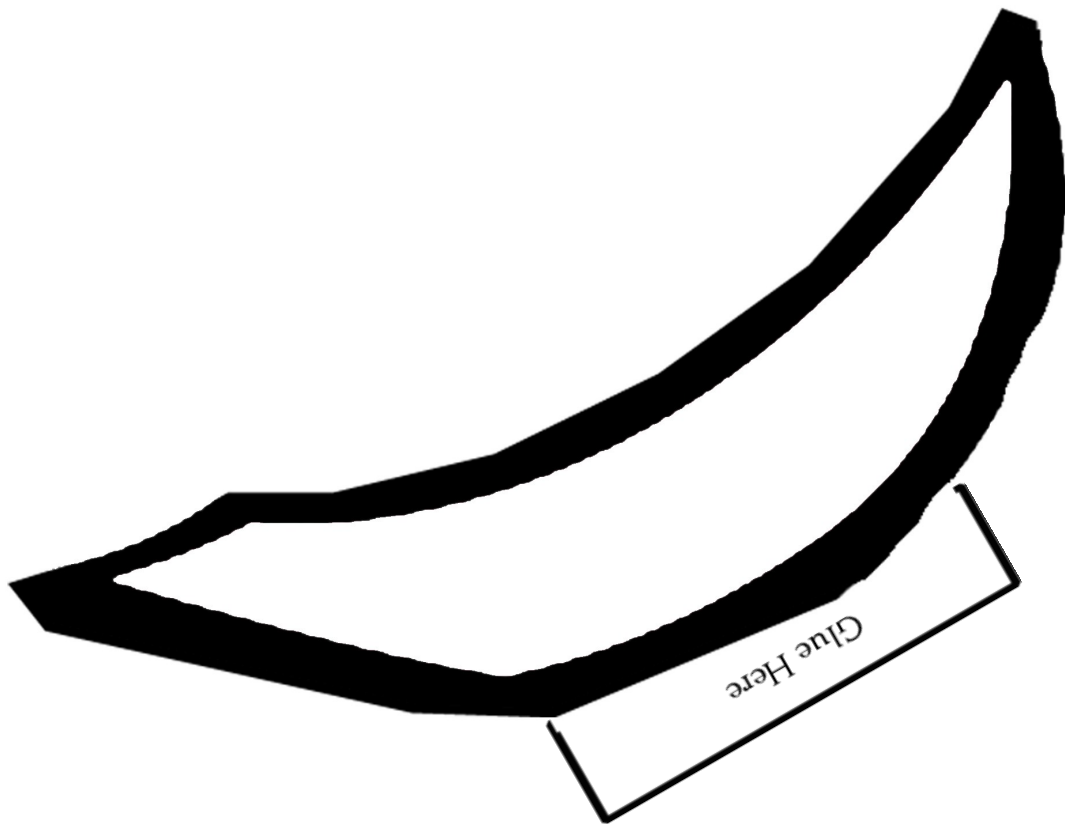
Heart



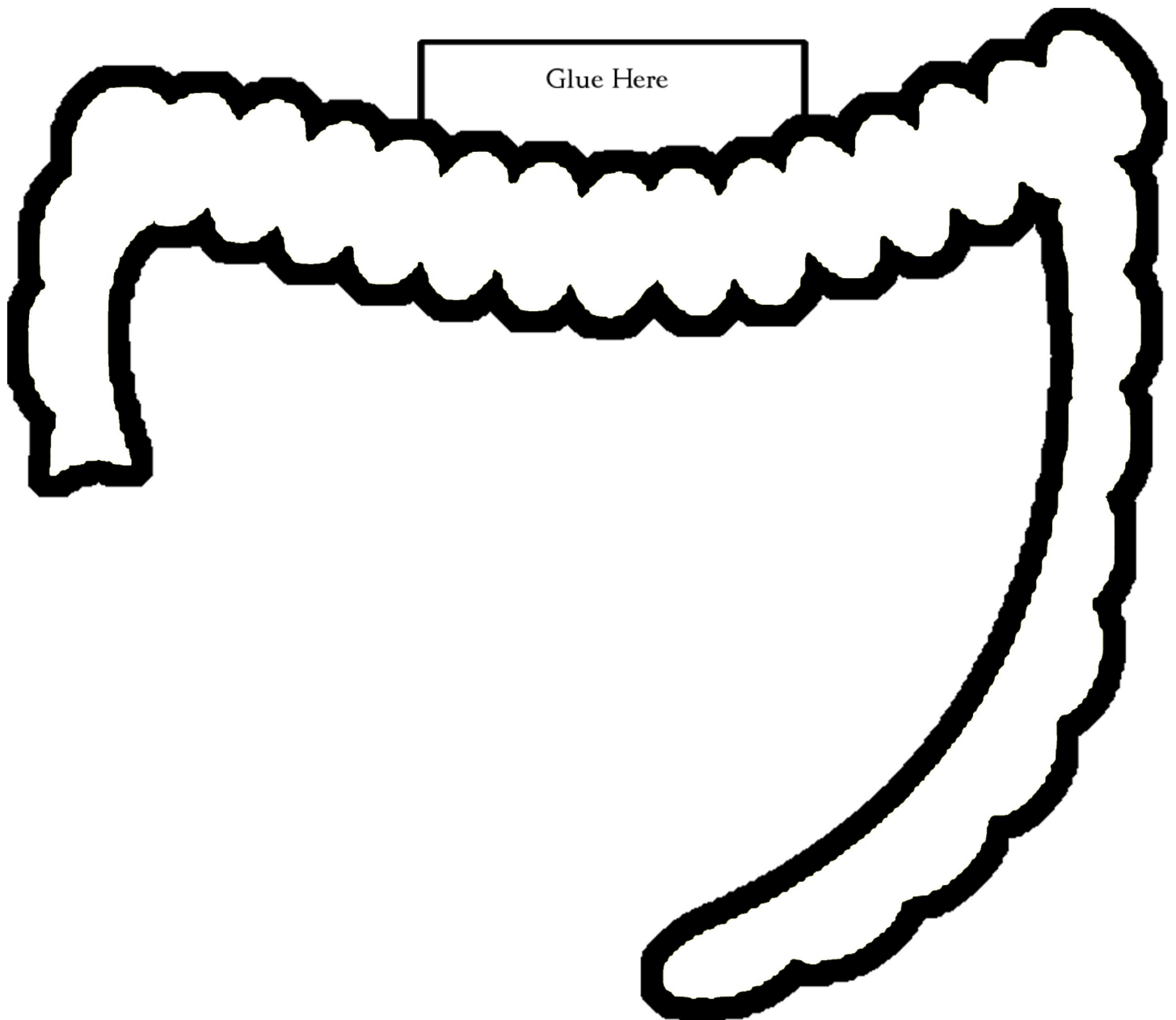
Liver



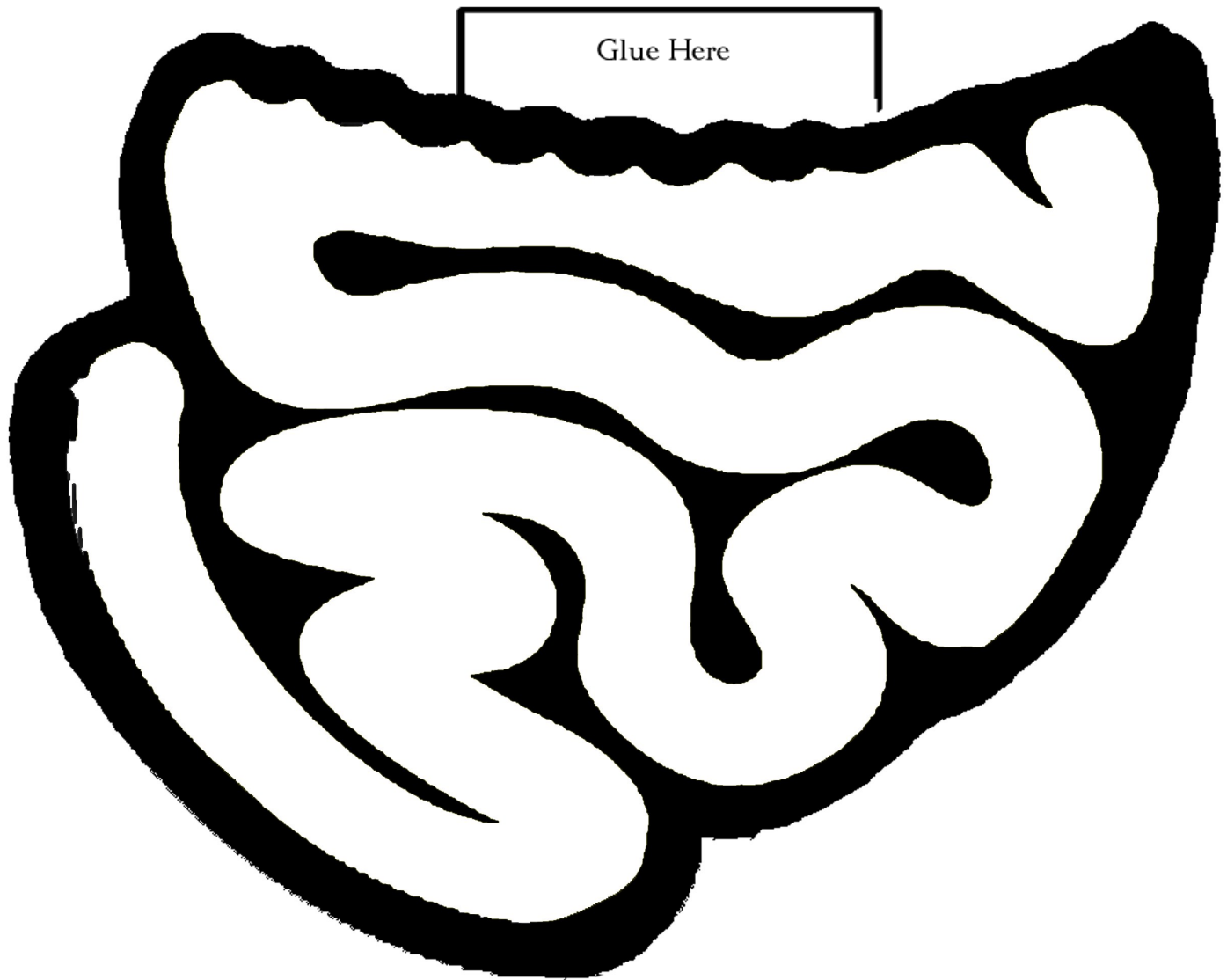
Stomach



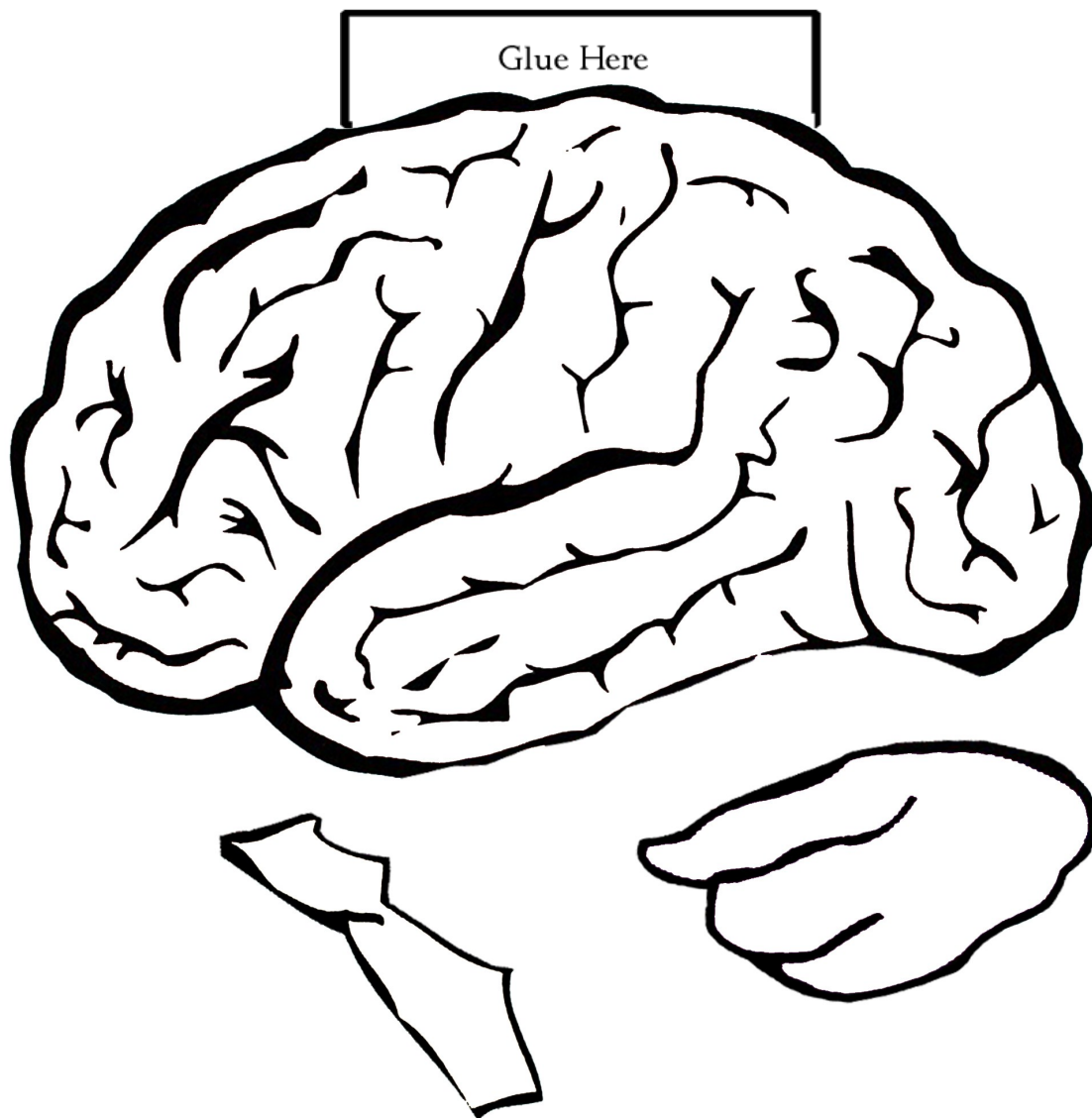
Large Intestine



Small Intestine



The Brain

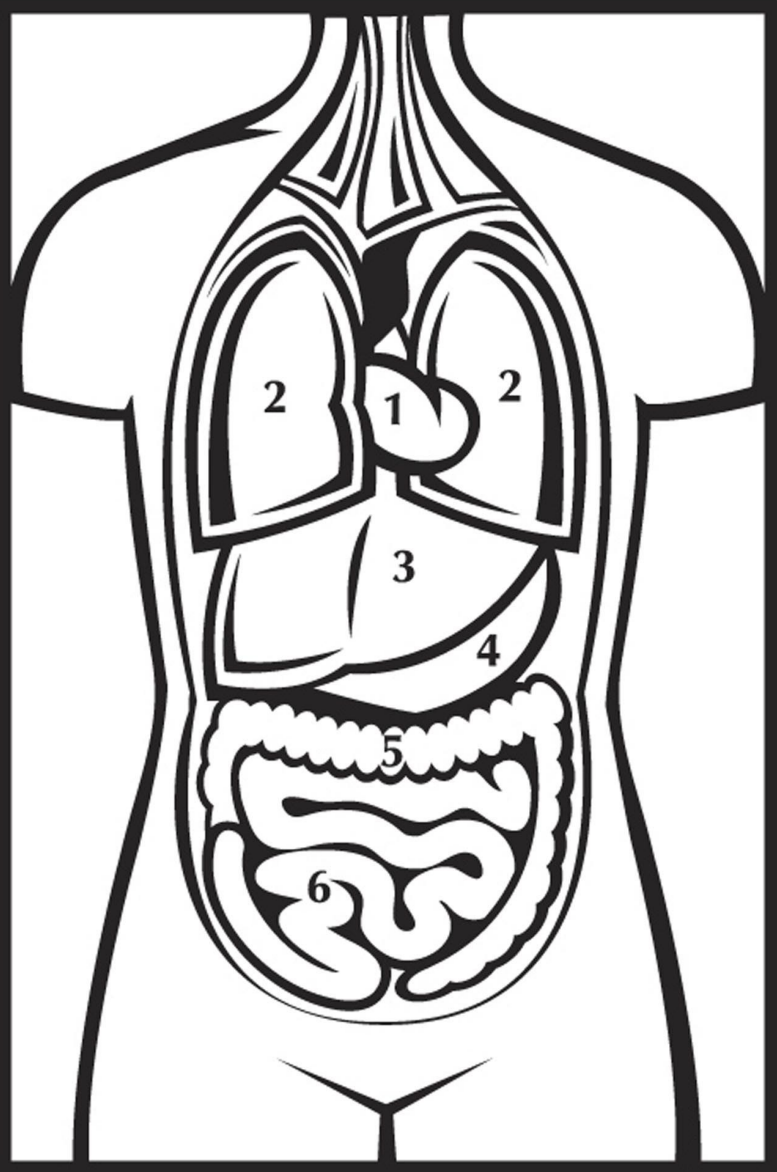


Human Organ Puzzle Key

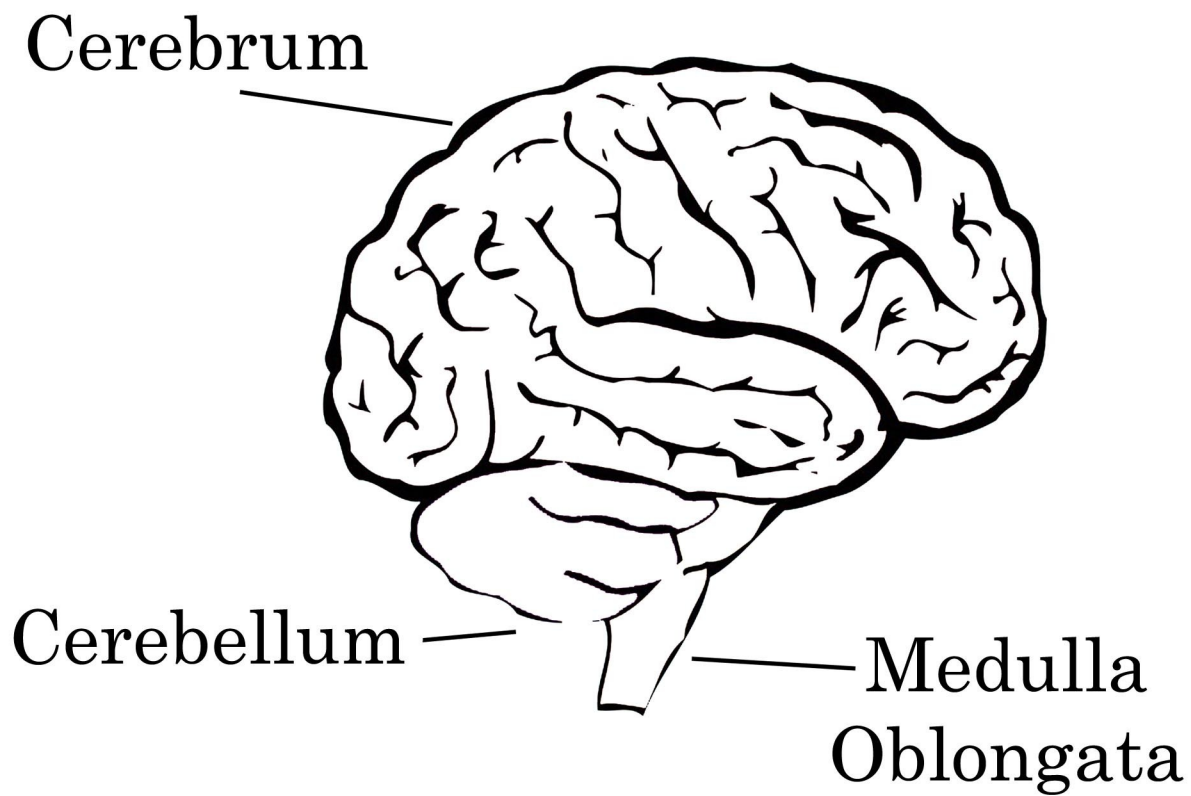
BODY ORGANS

Color the body organs

1. HEART
2. LUNGS
3. LIVER
4. STOMACH
5. LARGE INTESTINE
6. SMALL INTESTINE



Brain Diagram Key



Skeleton Key

