

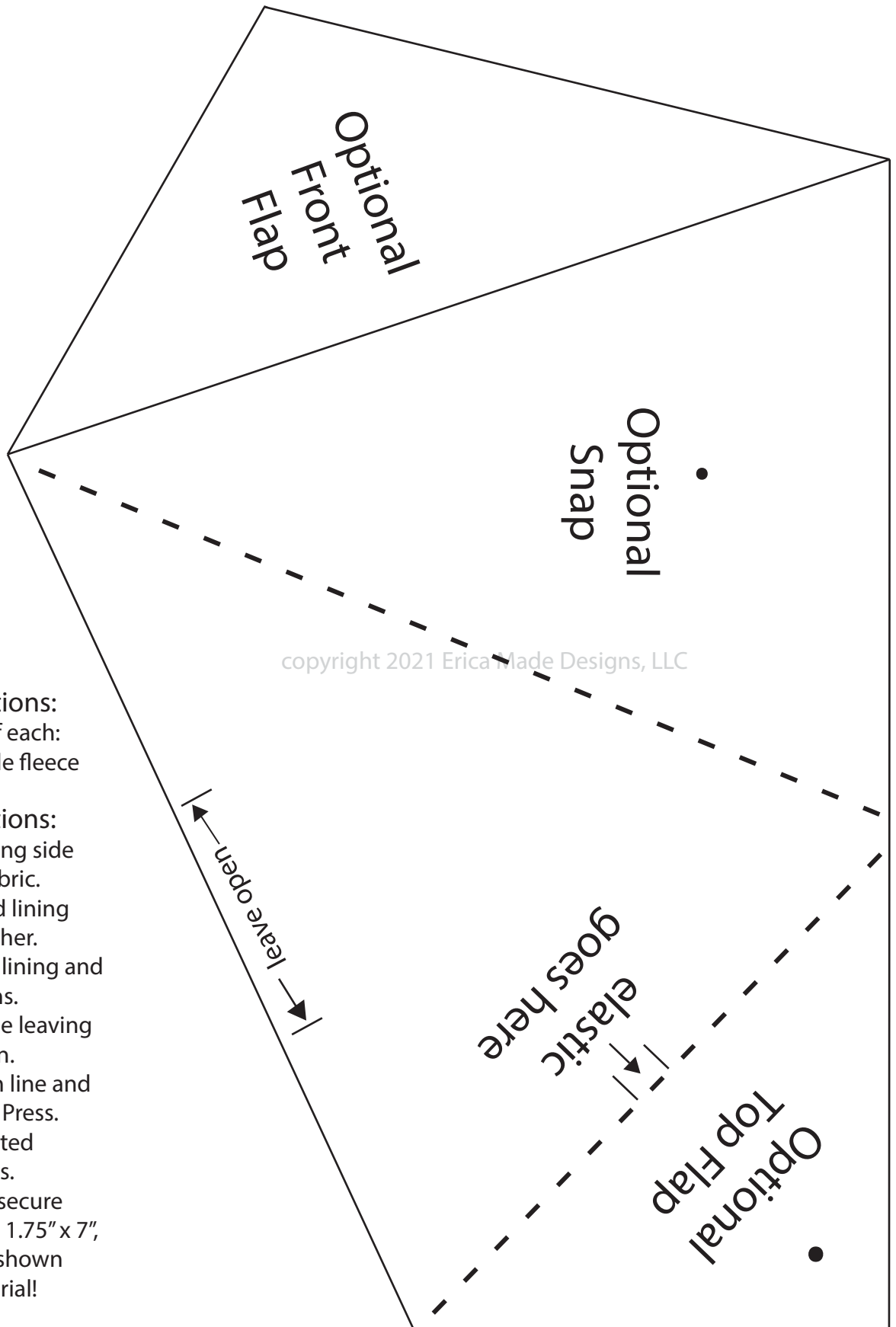


Easy Scissor Case

by Erica Arndt



Use this 1" box to make sure your printer is at 100%



Cutting Instructions:
Cut (1) 6.5" x 9.5" of each:
lining, outside, fusible fleece

- Sewing Instructions:**
- 1) Fuse fleece to wrong side of the outside fabric.
 - 2) Place outside and lining right sides together.
 - 3) Trace template onto lining and secure with pins.
Sew around drawn line leaving 2" open to turn.
 - 4) Trim 1/4" from stitch line and turn right side out. Press.
 - 5) Fold as indicated by dashed lines.
 - 6) Sew up sides to secure
- Optional: Add binding 1.75" x 7", elastic or snaps as shown in my video tutorial!